

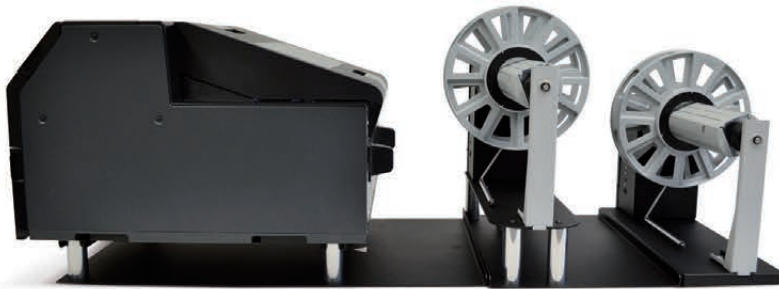
A WORLD OF SOLUTIONS

AGENCY CERTIFICATIONS



SMART SOLUTIONS FOR THE LABELING INDUSTRY

UNWINDER & REWINDER FOR EPSON C6500P PRINTER



Epson C6500P printer - LABEL UNWINDER (UW6500P) - LABEL REWINDER (RW6500P)
(Not included)

The Roll to Roll system specifically designed for Epson C6500P color label printer can handle rolls up to 220mm (8.66") media wide and having an outside diameter up to 250mm (10"). Both Unwinder and Rewinder are equipped with a fixed 3" core holder.

The printer will be locked over the printer plate. This way the correct unwinding / rewinding operations are guaranteed and units are safely aligned with the printer.

An external power supply 100/240VAC - 2.5A at 24V allows an electronic circuit to provide, through the tension arm, the automatic adjustment of the rotation direction and speed. A 2A fuse is used as protection.



LABEL UNWINDER

Used to increase the input roll capacity, it unwinds automatically the rolls having face-out labels only.

| LABEL UNWINDER | |
|----------------|--|
| UW6500P | Roll diameter up to 250mm (10") Media width up to 220mm (8.66") 3" fixed core holder |



LABEL REWINDER

Selecting onboard the operation mode, this device can be used as "label rewinder" to rewind face-in or face-out the printed labels otherwise as "backing paper rewinder" to rewind the waste liner.

| LABEL or BACKING PAPER REWINDER | |
|---------------------------------|--|
| RW6500P | Roll diameter up to 250mm (10") Media width up to 220mm (8.66") 3" fixed core holder |

A WORLD OF SOLUTIONS

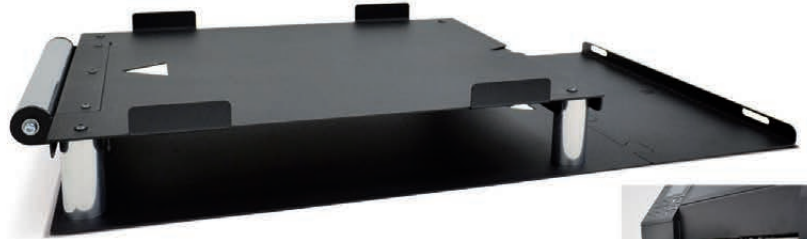
AGENCY CERTIFICATIONS



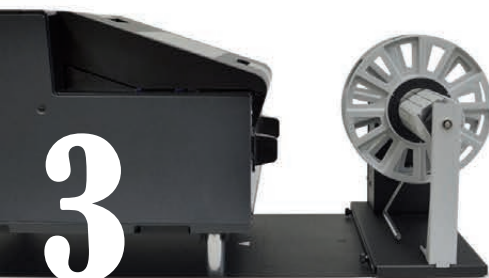
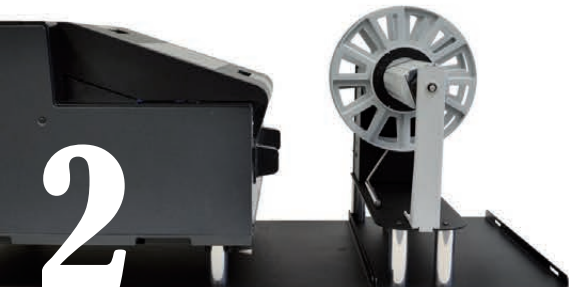
SMART SOLUTIONS FOR THE LABELING INDUSTRY

PRINTER PLATE

In order to guarantee a perfectly aligned media path, a specific baseplate (JPL-6500PE) which easily accommodates the Epson C6500P is recommended to have a complete Roll to Roll printing station.



The printed media or liner will pass underneath the printer.



USING THE SAME UNITS, MULTIPLE CONFIGURATIONS ARE AVAILABLE!

SELECT THE BEST OPTION TO FIT YOUR NEEDS.

1. High Capacity Roll to Roll

Using the external unwinder and rewinder will increase the production volume.

2. External Label Unwinder

It allows to load bigger input media roll.

3a. External Label Rewinder

It rewinds printed labels face-in or face-out.

3b. External Backing Paper Rewinder

When the printer is set on "peel-and-present" mode it rewinds the backing paper.

Dimensions:

L (config. 1) = 107cm (42,12")

L (config. 2) = 91cm (35,82")

L (config. 3) = 78cm (30,70")

W (config. 1, 2, 3) = 45cm (17,71")

H (config. 1, 2, 3) = 40cm (15,74")

